

FALL 2021

# STREETERS

## School-News

Celebrating Our School, Community, and Opportunities

**23**

BUS ROUTES  
DRIVEN DAILY

**1,546**

Average number of  
miles driven daily

**270,842**

Total miles driven  
during 2020-2021

**1,047**

Awesome K-12 students

**78**

Awesome PreK students

**60**

**COLLEGE CREDITS**

can be earned at Sauk Centre Public Schools

**17**

college courses offered and  
taught by Sauk Centre staff



## SCPS BY THE NUMBERS

**2**

**CLASSES THAT MEET ENTIRELY  
OFF CAMPUS AS PARTNERSHIPS  
WITH AREA BUSINESSES**

Careers in Community  
(Welding at Felling Trailers)

CEO Program  
(Creating Entrepreneurial Opportunities)

**1,520**

Chromebooks

**385**

iPads



**1,170**

AVERAGE

**MEALS SERVED DAILY**  
850 lunch / 320 breakfast

**30**

extra-curricular  
activities offered



**COMMUNITY EDUCATION  
PARTICIPANTS PER YEAR**

**1,899**  
students

**471**  
adults

**\$17 million**  
TOTAL expenditure  
budget

**270,000**

Square feet of  
space in Sauk  
Centre Schools

**11**

Articulated College Credits for  
Technical/Community College  
through **construction  
related courses** AT SCPS



**\$53,000**

Amount of Dollars for  
Scholars scholarships

awarded  
last  
Spring

FULL TIME STAFF

**170**

89 Teachers

41 Paraprofessionals

16 Bus Drivers/Mechanic

11 Admin/Admin Support

7 Custodians  
5 Secretaries  
1 Kid Connection

## INSIDE

**READ ON** for a personal message from Sauk Centre  
district leadership and to learn more about the  
upcoming Tuesday, November 2, 2021 referendum.

- ✓ Referendum Questions and Scope
- ✓ Input and Timeline
- ✓ Tax Impact
- ✓ Voting Information

*Go Streeters!*

Sauk Centre Public Schools  
903 State Road  
Sauk Centre, MN 56378

Non-Profit  
U.S. Postage  
PAID  
Permit #94  
Sauk Centre, MN 56378

Postal Patron  
ECRWSS





# SAUK CENTRE PUBLIC SCHOOLS REFERENDUM

SCHOOL. COMMUNITY. OPPORTUNITIES.

## GREETING FROM THE SUPERINTENDENT



As the 2021-22 School year is off and running, it is my hope that you'll enjoy this special edition of *Mainstreet School News*. The purpose of this community mailer is really twofold: one is to celebrate the new 2021-2022 school year and secondly, to share important information about the upcoming November 2nd Referendum. As you know, our community and school district have much to celebrate following a challenging couple years. The patience, support and understanding of our staff and families has allowed our students to find strength and focus during these unprecedented times.

The start of each new school year always brings with it a tremendous amount of excitement and enthusiasm! Given the challenges of the last 18 months, this year seems to have even more excitement than usual. This time of year also allows school district leadership and our entire community to reflect on the importance of the strategic plan work that has been on-going work for well over a year. It is also a time to refocus a commitment to our school district's mission and vision. Sauk Centre Public Schools Mission is **to provide educational opportunities that reach ALL learners; fosters student interests and passions; and encourages collaboration through community partnerships that provide real world skills and training.** Our vision is **to provide safe and innovative facilities that will continually develop 21st Century Learners who are ready and adaptable for a successful future.**

Following a thorough facilities assessment, the school board, district leadership, and various stakeholder groups have learned that the bones of our buildings are sound and have been well maintained. While this is a source of great pride for our district and community, the needs of our facility continue which is not uncommon in aged buildings. As a result of the tremendous strategic planning work that has been done by our entire community, a plan has been developed that provides an opportunity to redefine our learning spaces that will prepare and inspire future-ready Sauk Centre graduates.

It is our goal to present clear and transparent information about the November 2nd Referendum in this mailer as well as on our website and social media. This information will allow you to learn more, make a voting plan, and cast an informed vote.

Thank you again for your continued support of our students, staff, and school district!

### Go Streeters!

Patrick J. Westby  
Superintendent of Schools

## USE THIS QUICK ACCESS TO MORE DETAILS ON OUR WEBSITE!



- Referendum Overview
- Tax Impact
- Referendum Materials
- Ag2School Tax Credit
- Informational Videos
- FAQs
- Voting Information

OR VISIT THE WEBSITE BY ENTERING  
**www.isd743.org/ref21**

## MAKE A PLAN TO VOTE

*Tuesday,  
November 2  
7am - 8pm*

## WHY NOW?



### AGE OF OUR SECONDARY SCHOOL

- Our secondary school hasn't changed since it **was built in 1964 - over 55 years ago**, yet the world and education is vastly different today.



### LEARNING SPACES AND COMMUNITY OPPORTUNITIES

- Reimagining our facilities can expose Sauk Centre students to **authentic, future ready learning experiences.**
- Preparing students in our buildings, with relevant spaces and programming, allows for the **expansion of community partnerships.**



### PLAN INPUT FROM MANY STAKEHOLDERS

- This **plan was driven by input directly received** from District leadership, teachers, staff, students, and community members over an 18 month period.
- Input gathered through meetings, workshops, and surveys.



## QUESTION WE ASKED...

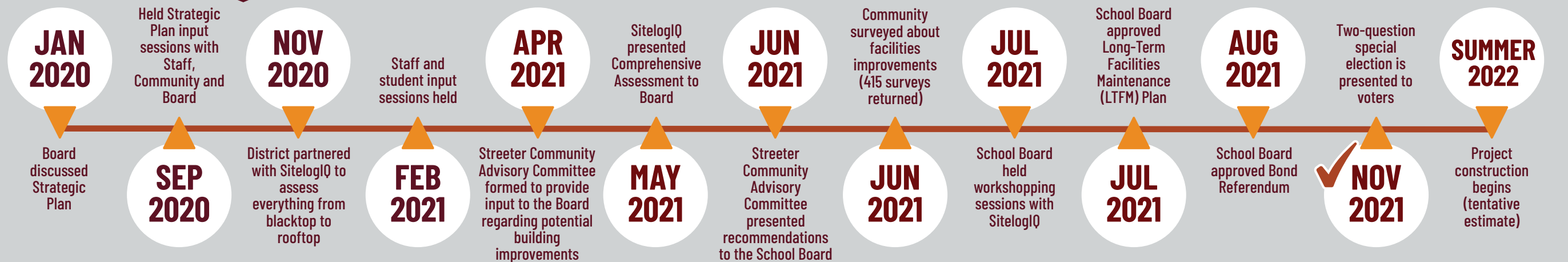
"Can our facility (built in 1965, 1970, 1995 & 2000) take us into the next 30-50 years and honor the current Mission and Vision of the school district?"



## ANSWER WE DISCOVERED...

"**YES!** The 'bones' of the buildings are good to take us into the next 30-50 years. **But, we learned the building systems and learning environments need to be addressed** if we are to provide a safe and healthy environment for staff and students and fulfill the charge of the School District's Mission and Vision."

## TIMELINE: Workshops and input sessions from district leaders, staff, students, and community



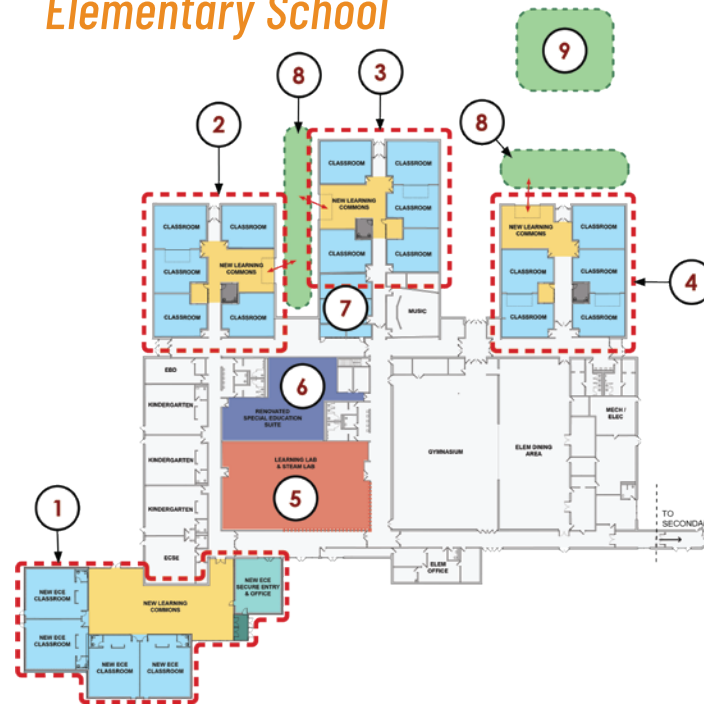
## WHAT WILL BE ON THE BALLOT? Two questions will be presented to voters

### QUESTION 1 | Technology Levy | Renewal

This levy provides a dedicated source of technology funding for our school district. If approved by voters, these dedicated funds would continue to provide our students and staff with the support and technology infrastructure needed to maximize classroom learning as well as continue with safety and security in our buildings.

- ▶ Continues the current Technology Levy that was approved six years ago and is expiring after this year.
- ▶ Because this would be **a renewal of the current technology levy that is in place - there would be no additional tax impact.**

### Elementary School



### Secondary Second Level



### Secondary First Level




### QUESTION 2 | Building Bond | \$26,450,000

The bond project is primarily focused on repurposing and reimagining the learning environments and takes fiscal advantage of being completed with other already scheduled infrastructure projects.

- ▶ **ADA-accessibility improvements to existing restrooms in the secondary building. (19, 20, 21, 23)**
  - Existing restroom fixtures and finishes are dated, facilities are not ADA accessible.
- ▶ **The construction and equipping of an early childhood center, storm shelter, and outdoor projects yard at the elementary school. (1, 8, 9)**
  - Current Early Childhood programs are at max capacity and the facility does not have the space to increase enrollment to support community demand. The space currently occupied by early childhood is to be renovated to create collaborative learning environments and to expand program offerings. The update will also provide a separate secure entry and storm shelter.
  - Greenhouse kit will allow for year round exposure to agricultural curriculum, cross-collaboration opportunities, and shared experiences between the elementary and secondary.
- ▶ **Remodeling and improvements to the existing elementary school library and computer lab. (5)**
  - With the transition to 1:1 electronic devices, the computer lab is underutilized. This update creates an interactive learning lab at the heart of the school. The project includes a STEAM lab and breakout spaces to provide additional collaborative learning spaces.
- ▶ **Remodeling and improvements to create learning communities at the elementary school. (2, 3, 4)**
  - The existing classroom layout is traditional and lacks flexibility and collaborative spaces to support future ready learning. The project remodels the existing wings and adds connections between classrooms, commons and corridors.
- ▶ **The remodeling and equipping of the elementary school special education suite, the addition of a sensory room at that site, subdividing existing elementary classrooms to create smaller classrooms and break-out areas. (6, 7)**
  - This update increases visual connections to adjacent spaces and reorganizes space to fit current needs and adds a needed sensory room.
- ▶ **The construction and equipping of learning commons spaces in the secondary building. (10, 15, 22)**
  - Convert courtyard to a year round learning commons with classroom access and natural light.
  - Remodel Tech Center/Computer Lab into a relevant, flexible, and collaborative learning space.
  - Remodel classroom space for flexible, relevant learning areas in grades 5-8.
- ▶ **The remodeling and equipping of the media center, staff lounge, career and technical education spaces. (11, 12, 14, 16)**
  - The traditional media center turned modern learning lab will include open sight lines, collaborative space, interactive tech spaces, break out rooms and comfortable reading areas. It includes new finishes and collaborative furniture.
  - The current staff lounge is outdated and undersized. The project renovates, expands, and includes a new staff restroom.
  - Existing shops are separated which limit programming opportunities. The plan is to reconfigure spaces to provide large, connected woods, metals, auto, fabrication lab and new flexible CTE classrooms. It also adds an open ideation breakout space along the corridor.
- ▶ **The construction and equipping of a new cafeteria and storm shelter at the secondary school building. (13)**
  - The current cafeteria is undersized to support the school's enrollment and finishes are dated. This project demos existing structure and builds a new multi-purpose cafeteria to increase utilization by the school and community. The new construction includes a storm shelter and additional restrooms.
- ▶ **Remodeling and improvements to create a culinary arts learning space with break-out areas. (17)**
  - The existing FACS room is dated and no longer supports programming demands of the district. The plan is to remodel existing space to include a new culinary arts teaching kitchen and two open breakout spaces with a coffee shop feel. The casework is older steel with laminate tops and several surfaces are chipped or scratched.
- ▶ **Renovations to the existing science lab to create classrooms and storage areas. (18)**
  - Room is no longer used for science programming. Remodel lab into general classroom and add new storage.
- ▶ **Upgrades and improvements to lighting, boilers, water distribution systems, the central clock and public address system.**
  - The referendum scope includes the replacement of the Pool Boiler with a high efficiency hot water pool boiler to increase efficiency for the system.
  - There is a wide variety of lighting opportunities in the Elementary and Auditorium additions. Some areas in the facility are over lit, resulting in wasted energy, while some areas have insufficient light levels, which is undesirable for the learning environment. The new systems will increase energy efficiency while reducing energy costs long-term.
  - The existing plumbing piping system and accessories are original to the High School and Grades 5-8 section of the building. After over fifty years of use, there is typically considerable buildup of sediment and minerals in plumbing systems, and there have been multiple failures in the piping systems.
  - The existing clock and PA systems serving high school have exceeded their life expectancy. Finding replacement parts for the PA system is becoming more difficult.
- ▶ **The construction of roofing repairs and improvements at the elementary school and auditorium.**
  - The roof over the Auditorium and Elementary School addition is original to those additions. The district has been replacing their roofs with polyvinyl chloride (PVC). It is recommended to replace this roof with a new PVC roofing material. Curbs for rooftop equipment should be resealed. Ponding water should be eliminated with new roofing systems put in place, by improving the pitch of the roof.

Match numbers  
by each  
scope item to  
the map area



| TAX IMPACT   |                              | BOARD APPROVED<br>ON JULY 19, 2021                       |         | TECHNOLOGY<br>LEVY      |               | BUILDING<br>BOND  |         |
|--|------------------------------|--|---------|-------------------------|---------------|-------------------|---------|
|  |                              | (voter approval not needed)                              |         | (voter approval needed) |               |                   |         |
|  | ESTIMATED<br>MARKET<br>VALUE | LONG-TERM<br>FACILITIES MAINTENANCE<br>(HEALTH & SAFETY) |         | QUESTION<br>1           | QUESTION<br>2 | BOTH<br>QUESTIONS |         |
|  |                              | ANNUAL   | MONTHLY | ANNUAL                  |               | ANNUAL            | MONTHLY |
| <div>RESIDENTIAL<br/>HOMESTEAD</div> <div></div> <div>* \$175,000 is the<br/>average estimated<br/>market value for a<br/>home in Sauk Centre</div> | \$50,000                     | \$12   | \$1     | \$0                     | \$45          | \$45              | \$4     |
|  | 100,000                      | 29   | 2       | 0                       | 108           | 108               | 9       |
|  | 125,000                      | 41   | 3       | 0                       | 150           | 150               | 13      |
|  | 150,000                      | 52   | 4       | 0                       | 191           | 191               | 16      |
|  | * 175,000                    | 63   | 5       | 0                       | 232           | 232               | 19      |
|  | 200,000                      | 74   | 6       | 0                       | 273           | 273               | 23      |
|  | 250,000                      | 97   | 8       | 0                       | 355           | 355               | 30      |
|  | 300,000                      | 119  | 10      | 0                       | 438           | 438               | 37      |
|  | 400,000                      | 164  | 14      | 1                       | 602           | 603               | 50      |
|  | 500,000                      | 205  | 17      | 1                       | 755           | 756               | 63      |
| <div>COMMERCIAL/<br/>INDUSTRIAL</div>  | \$50,000                     | \$31   | \$3     | \$0                     | \$113         | \$113             | \$9     |
|  | 100,000                      | 62   | 5       | 0                       | 227           | 227               | 19      |
|  | 250,000                      | 174  | 15      | 1                       | 642           | 643               | 54      |
|  | 500,000                      | 380  | 32      | 2                       | 1,397         | 1,399             | 117     |
| <div>AGRICULTURAL<br/>HOMESTEAD**</div> <div>(average value per acre<br/>of land and buildings)</div>  | \$3,000                      | \$0.20   | \$0.02  | \$0.00                  | \$0.91        | \$0.91            | \$0.08  |
|  | 3,500                        | 0.23   | 0.02    | 0.00                    | 1.06          | 1.06              | 0.09    |
|  | 4,000                        | 0.27   | 0.02    | 0.00                    | 1.21          | 1.21              | 0.10    |
|  | 4,500                        | 0.30   | 0.03    | 0.00                    | 1.36          | 1.36              | 0.11    |
|  | 5,000                        | 0.33   | 0.03    | 0.00                    | 1.51          | 1.51              | 0.13    |
|  | 5,500                        | 0.37   | 0.03    | 0.00                    | 1.66          | 1.66              | 0.14    |
| <div>AGRICULTURAL<br/>NON-HOMESTEAD**</div> <div>(average value per acre<br/>of land and buildings)</div>  | \$3,000                      | \$0.40   | \$0.03  | \$0.00                  | \$1.81        | \$1.81            | \$0.15  |
|  | 3,500                        | 0.47   | 0.04    | 0.01                    | 2.11          | 2.12              | 0.18    |
|  | 4,000                        | 0.53   | 0.04    | 0.01                    | 2.42          | 2.43              | 0.20    |
|  | 4,500                        | 0.60   | 0.05    | 0.01                    | 2.72          | 2.73              | 0.23    |
|  | 5,000                        | 0.67   | 0.06    | 0.01                    | 3.02          | 3.03              | 0.25    |
|  | 5,500                        | 0.74   | 0.06    | 0.01                    | 3.32          | 3.33              | 0.28    |
| <div>SEASONAL<br/>RECREATIONAL<br/>RESIDENTIAL</div>   | \$50,000                     | \$21   | \$2     | \$0                     | \$76          | \$76              | \$6     |
|  | 100,000                      | 41   | 3       | 0                       | 151           | 151               | 13      |
|  | 150,000                      | 62   | 5       | 0                       | 227           | 227               | 19      |
|  | 200,000                      | 82   | 7       | 0                       | 302           | 302               | 25      |
|  | 250,000                      | 103  | 9       | 0                       | 378           | 378               | 32      |
|  | 500,000                      | 205  | 17      | 1                       | 755           | 756               | 63      |



**TAX CALCULATOR**  
HOW WILL THIS  
AFFECT ME?

Grab your tax bill and visit the website to find your tax impact using our tax calculator **OR** use your smartphone camera to scan this QR code for quick access!  
[www.isd743.org/ref21](http://www.isd743.org/ref21)



Ehlers, District financial advisors



**LEARN MORE ABOUT THE NOVEMBER 2 VOTE**

MAKE A PLAN TO VOTE

Polls will be open 7am to 8pm on voting day, November 2, 2021. Additional voting information is available at [www.isd743.org/ref21](http://www.isd743.org/ref21).

COMBINED POLLING LOCATION

Sauk Centre City Hall  
320 Oak Street South  
Sauk Centre, Minnesota 56378

VOTE EARLY ABSENTEE


You can vote early with an absentee ballot at the Sauk Centre Public Schools District Office located at 903 State Road, until Monday, November 1, 2021 at 4:00pm. Early voting hours are Monday - Friday from 7:30am - 4:00pm. If you are not registered, you can do so in person if you show proof of residence.

-  **CALL**  
320-352-2258
-  **EMAIL**  
[patrick.westby@isd743.org](mailto:patrick.westby@isd743.org)
-  **WEBSITE**  
[www.isd743.org/ref21](http://www.isd743.org/ref21)
-  **SOCIAL MEDIA**  
[@Sauk Centre Schools](https://www.facebook.com/SaukCentreSchools)

WE ARE HAPPY TO ANSWER QUESTIONS YOU MAY HAVE!

**Superintendent of Schools:**  
Patrick J. Westby, Superintendent | 320-352-2258 | [patrick.westby@isd743.org](mailto:patrick.westby@isd743.org)

**Sauk Centre Board of Education:**  
Brad Kirckhof, Chairperson | 320-335-1270 | [brad.kirckhof@isd743.org](mailto:brad.kirckhof@isd743.org)  
Ann Hess, Vice Chairperson | 320-219-9534 | [ann.hess@isd743.org](mailto:ann.hess@isd743.org)  
John Rasmussen, Treasurer | 320-247-0761 | [john.rasmussen@isd743.org](mailto:john.rasmussen@isd743.org)  
Margy Umhoefer, Clerk | 320-293-9469 | [margy.umhoefer@isd743.org](mailto:margy.umhoefer@isd743.org)  
Mike Bushard, Sr. | 320-249-1611 | [mike.bushard@isd743.org](mailto:mike.bushard@isd743.org)  
Shane DeFoe | 320-309-0946 | [shane.defoe@isd743.org](mailto:shane.defoe@isd743.org)  
John Drevlow | 763-807-4636 | [john.drevlow@isd743.org](mailto:john.drevlow@isd743.org)



**AG2SCHOOL  
TAX CREDIT**


“... a win-win for farmers  
and rural school districts.”  
- Minnesota Farmers Union

**Ag2School Highlights**

- This state-wide tax credit **reduces the burden for agricultural property owners** on existing and future school building bonds.
- The credit applies to all current and future school construction bonds.
- The Ag2School credit **will result in the State of Minnesota paying a significant portion of the total bond project cost.**
- There is **no application necessary** to receive the Ag2School credit.
- The **tax credit is reduced automatically** on the agricultural landowner’s property tax bill.
- Non-agricultural landowners **will NOT see an increase in their taxes as a result of this tax credit** as the burden of the credit is paid entirely by the State of Minnesota.

If the Sauk Centre Public Schools referendum passes in November, **agricultural landowners will see an automatic 60% credit on their property tax bill** related to the impact of the referendum. This will increase to 70% in 2023 and thereafter.

**60%**  
for taxes payable in 2022



**70%**  
for taxes payable in 2023 and thereafter

DID YOU KNOW?  
The State of Minnesota will pay a significant portion of the total bond project cost.

By 2023, the State **will pay 19% of the district’s bond payments**, or approximately **\$5 million** of the \$26,450,000 bond amount through the Ag2School Tax Credit program.  
**This reduces the burden to Sauk Centre tax payers.**